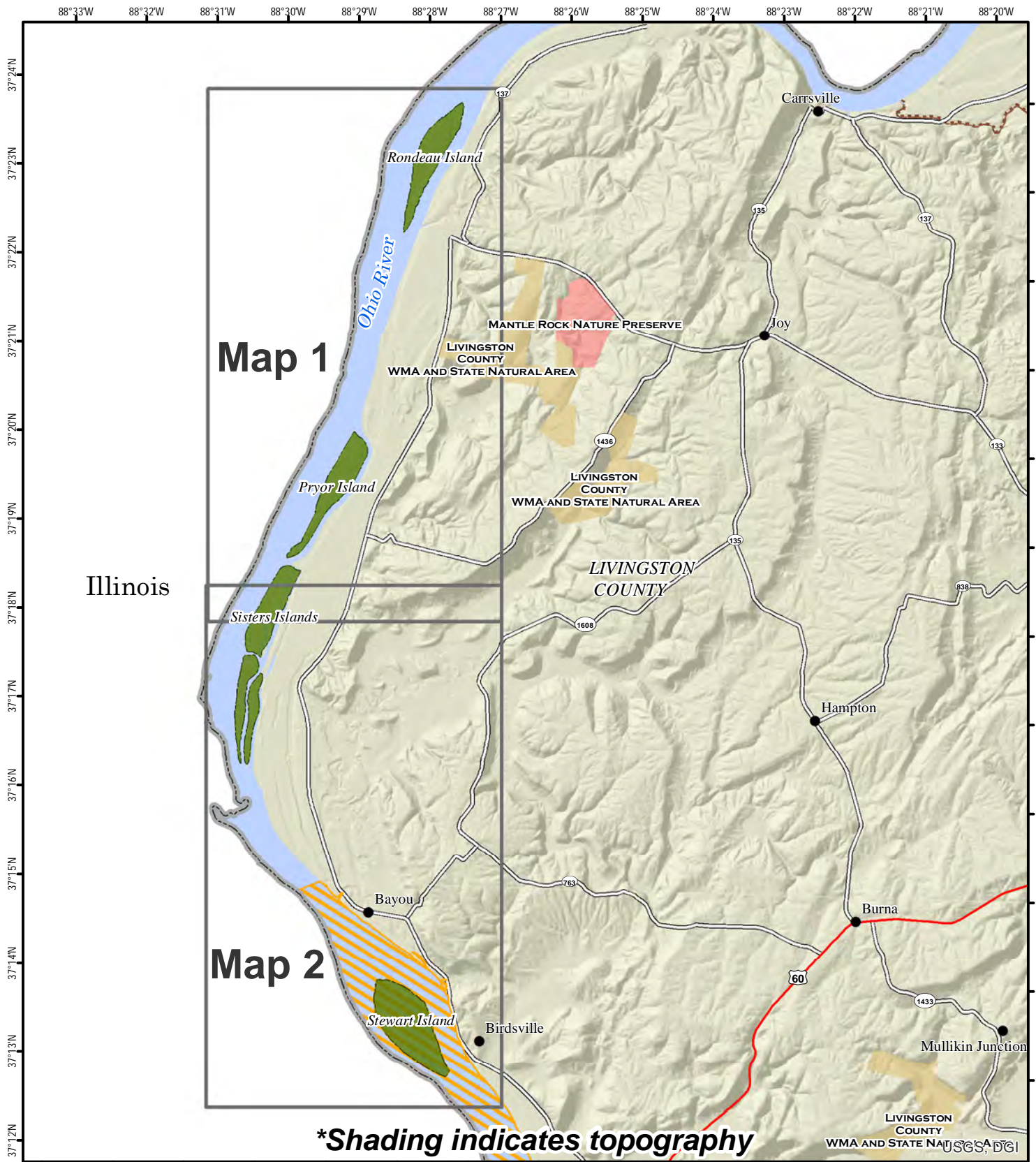




Ohio River Islands Wildlife Management Area



Illinois

Map 1

Map 2

***Shading indicates topography**

LIVINGSTON COUNTY WMA AND STATE NATURAL AREA
USGS, DGI

A map legend and additional information are provided on PDF pages that accompany this map.

Publication Date: 11/17/2016



Scale 1:110,000



Note to Map Users

Map prepared by Kentucky Department of Fish & Wildlife Resources (KDFWR). Although KDFWR strives for accuracy, data used to create this map are from a variety of sources and dates; as such, KDFWR makes no representations regarding the accuracy or fitness for use of the information furnished herein.



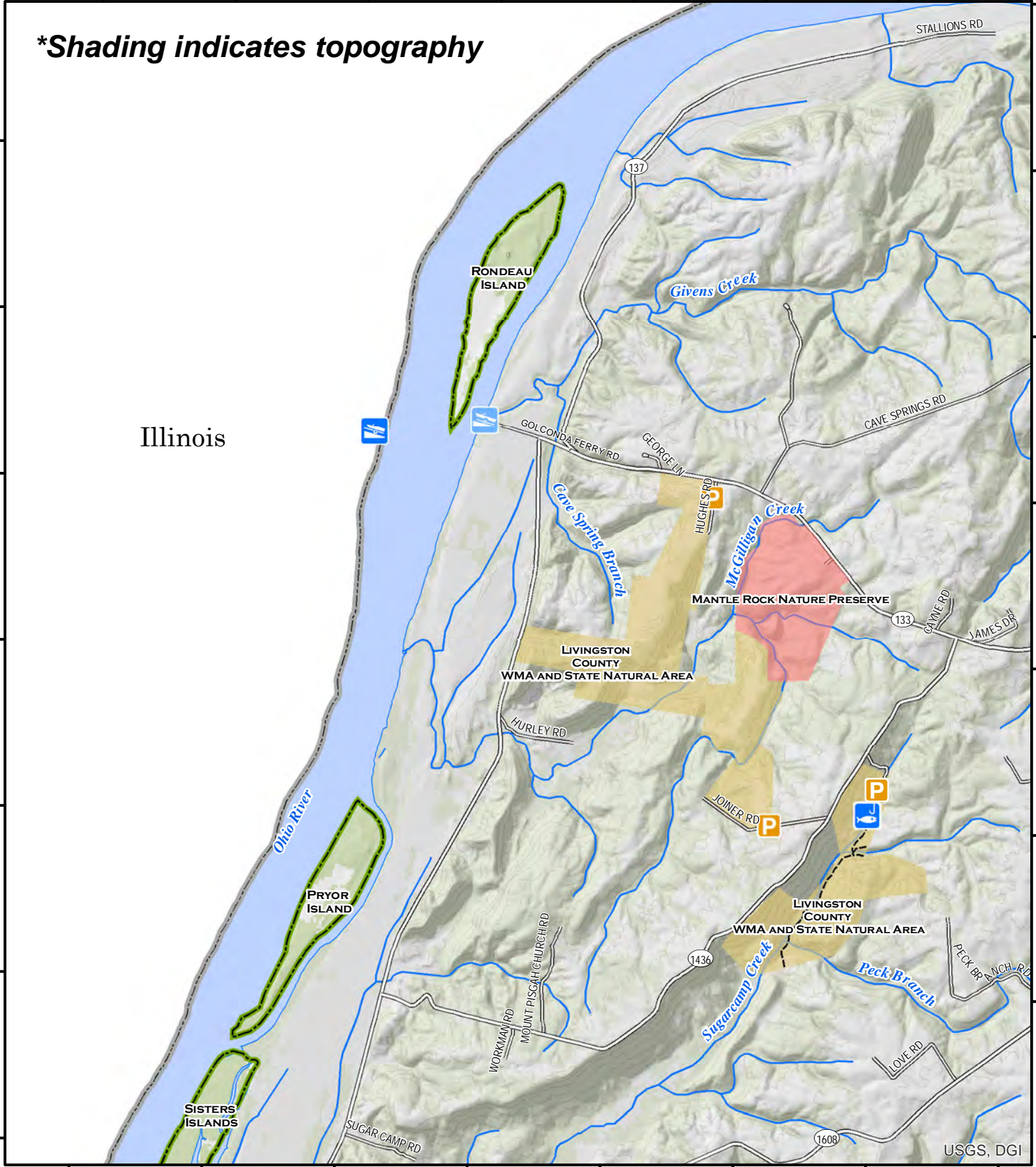
Ohio River Islands Wildlife Management Area-Map 1



88°31'W 88°30'W 88°29'W 88°28'W 88°27'W 88°26'W 88°25'W 88°24'W

***Shading indicates topography**

37°24'N
37°22'N
37°21'N
37°20'N
37°19'N
37°18'N

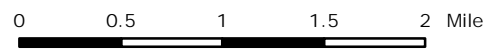


Illinois

A map legend and additional information are provided on PDF pages that accompany this map.

Publication Date: 11/18/2016
Land Classification from National Land Cover Database 2011

See adjoining Map 2



Scale 1:60,000

Contour interval: 50 feet



Note to Map Users

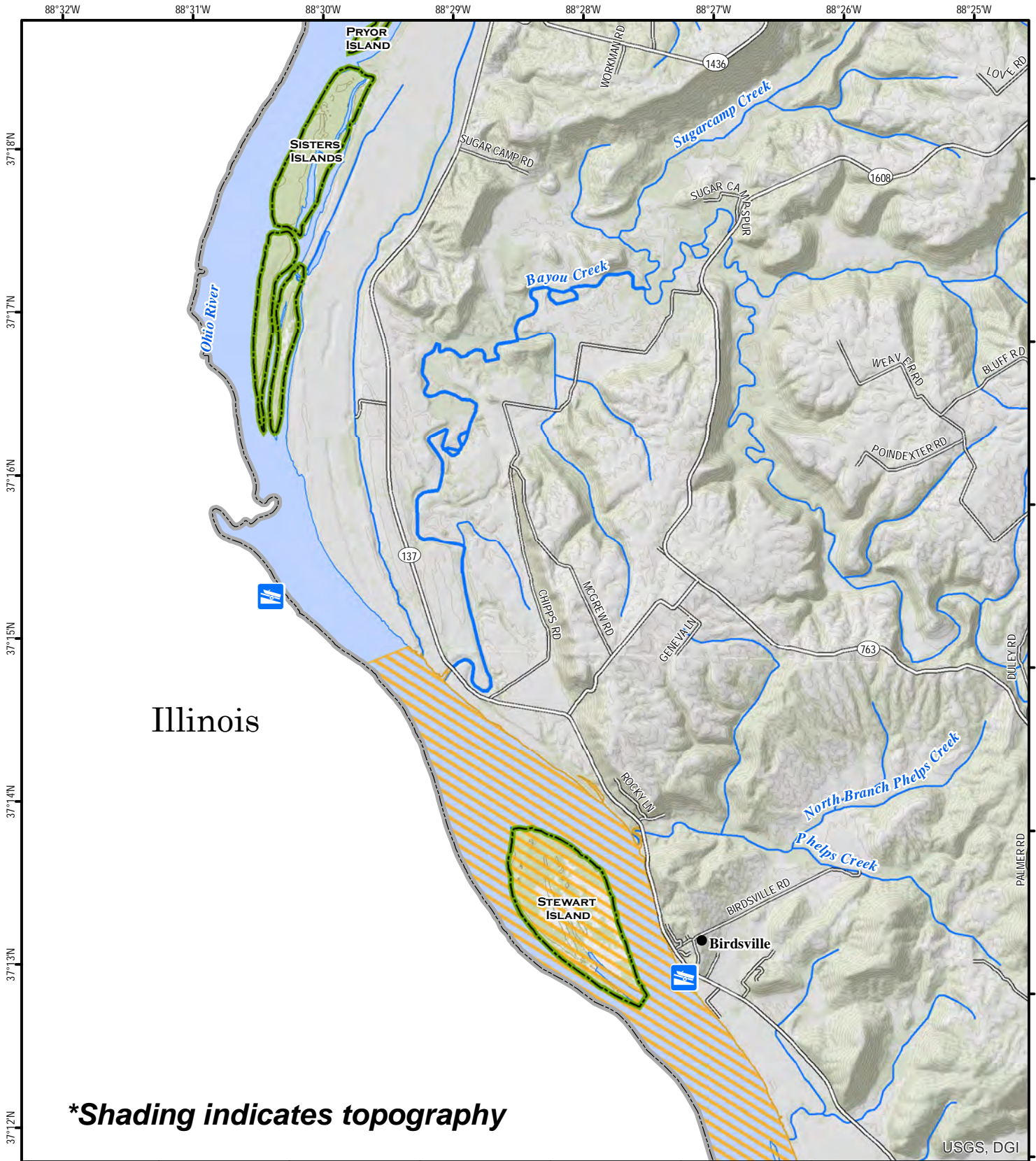
Map prepared by Kentucky Department of Fish & Wildlife Resources (KDFWR). Although KDFWR strives for accuracy, data used to create this map are from a variety of sources and dates; as such, KDFWR makes no representations regarding the accuracy or fitness for use of the information furnished herein.

USGS, DGI



See adjoining
Map 1

Ohio River Islands Wildlife Management Area-Map 2



Illinois

***Shading indicates topography**

USGS, DGI

A map legend and additional information are provided on PDF pages that accompany this map.

Publication Date: 11/18/2016
Land Classification from National Land Cover Database 2011



0 0.5 1 1.5 2 Mile

Scale 1:60,000

Contour interval: 20 feet



Note to Map Users

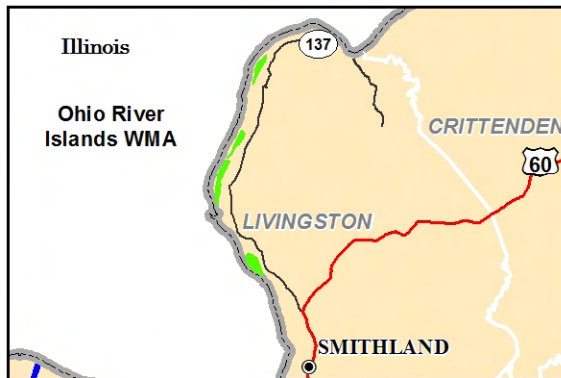
Map prepared by Kentucky Department of Fish & Wildlife Resources (KDFWR). Although KDFWR strives for accuracy, data used to create this map are from a variety of sources and dates; as such, KDFWR makes no representations regarding the accuracy or fitness for use of the information furnished herein.

Ohio River Islands WMA Information

Public Hunting Area Location



Regional Locator



Directions & Description:

Ohio River upstream from Smithland Lock and Dam. Stewart (Birdsville) Island and surrounding river area is a waterfowl refuge closed Oct. 15-March 15. Accessed by numerous ramps along Ohio River, including Birdsville Ramp off KY137. Public hunting allowed prior to closure. Twin Sisters, Pryor, Rondeau islands and a large marsh area located between Pryor and Twin Sisters islands provide waterfowl hunting from temporary blinds.

Access to the islands on Kentucky side north islands at Givens Creek Ramp off of Golconda Ferry RD, and south at Birdsville Ramp off of Birdsville RD at KY 137. Roads are accessible off of KY 137, north of Smithland, and on the Illinois side at Davidson Memorial Boat Ramp and Golconda Marina Ramp.

Owned by U.S. Army Corps of Engineers.

Online Resources

Public Hunting Area users must abide by the Kentucky hunting, trapping, and fishing regulations. It is incumbent on persons using Public Hunting Areas to become familiar with these regulations. Kentucky Department of Fish & Wildlife Resources provides these regulations on our Web site at fw.ky.gov or by calling 1-800-858-1549.

WMA Overview

Location & Size: Livingston County, 1,264 acres.

Contact: (270) 753-6913

Elevation: minimum 302 feet, maximum 347 feet.

Entrance GPS coordinate: Latitude N 37.22016, Longitude W -88.45158

Area Habitat: mostly wetland: open land 4%, forest 14%, wetland 75%, open water 8%

Wildlife Management Area Map Notes & Legend

NOTE TO MAP USERS:

For most WMA maps the landscape is depicted using a combination of elevation contours, hillshading and a green tint indicating woodland areas that is derived from satellite imagery. On WMAs that are relatively small or have a history of surface mining aerial photography is used.

WMA Map Legend

	WMA Office		WMA Boundary		Populated Place
	Information Kiosk		Aerial photograph		Kentucky Boundary
	Check station		Other Public Hunting Areas		Interstate Highway
	Mobility-impaired Hunting Blind		Area Off Limits		Kentucky Parkway
	Trailhead		No Hunting		U.S. Highway
	Horseback Trailhead		Seasonally Restricted Access		State Highway
	Parking Lot		Mobility Impaired Hunting Area		Local Road
	Picnic Area		Primitive Hunting Only		Forest Service Road
	Restrooms		Foot Traffic Only		Active Railroad
	Wildlife Viewing Site		Open Water		Abandoned Railroad
	Interpretive Site		Wetland		Federal Recreation Trail
	Retriever Training Site		Woodland		WMA Road
	Gate				WMA Foot Trail
	Campground				WMA Horse Trail
	Cemetery				Gas Pipeline
	Corps of Engineers Office				Powerline
	Waterfowl Blind				Rivers and Streams
	Shooting Range				Dam
	Established Bank Access				Trout Waters
	Fishing Pier				Elevation Contour
	Carrydown Launch				
	Small Boat Ramp				
	Large Boat Ramp				
	State Park Office				